



## DR90A3000

### Ventilating Dehumidification System

#### SPECIFICATION DATA

#### DR90A3000 Capacities and Performance

Part Number:	DR90A3000
Blower:	320 CFM @ 0.0 in. WG 215 CFM @ 0.6 in. WG
Supply Voltage:	120 VAC; 60 Hz.
Amps:	5.3 A
Power transformer to R/C terminals:	24 VAC, 0.85A
Energy performance:	2.9 liters (6.1 pints) per kilowatt hour (KWH) Energy
Refrigerant:	R-410A
Operating Temp Range (outside cabinet):	34 – 135 °F (1.1 – 57.2 °C)
Capacity:	47 pints/day (60 °F [15.6 °C], 60 %RH) 65 pints/day (70 °F [21.1 °C], 60 %RH) 90 pints/day (80 °F [26.7 °C], 60 %RH)
Coverage:	Up to 2800 sq. ft.
Duct Connections:	6 in. Supply Inlet 10 in. Round Inlet 10 in. Round Outlet (ABS Plastic)
Filter Efficiency:	Standard MERV-11
Drain Connection:	3/4 in. threaded female NPT, with attached 3/4 in. threaded male NPT

#### Dimensions (See Fig. 1):

Width:	14-3/4 in.
Height:	19-7/8 in.
Length:	25-7/8 in. (without collars)
Collar Length (each)	3-1/8 in.
Weight:	86 lbs (39 Kg)

#### Shipping Specs

Width:	19.3 in.
Height:	25.2 in.
Length:	35.8 in.
Weight:	95 lbs (43 Kg)

#### Optional Parts

Replacement Filter	50070171-002
Motorized Ventilation Damper	EARD6
Bypass Damper	CPRD10

ETL Listed per UL 60335-1, 60335-2-40, CSA C22.2 No. 60335-1 and 60335-2-40

For more information call 1-800-468-1502 or visit our website at [customer.resideo.com](http://customer.resideo.com).

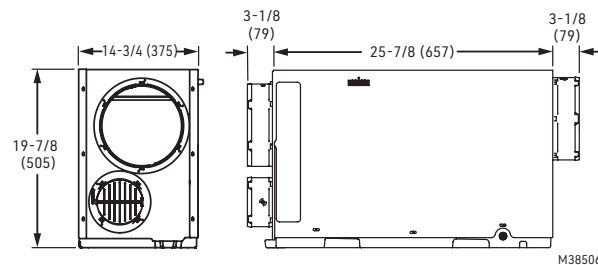
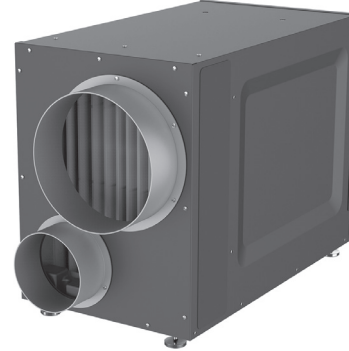


Fig. 1. Dimensions in in. (mm).

Whole-House Dehumidifiers are designed to help maintain proper humidity levels in the home. Lower humidity levels feel more comfortable, and helps safeguard against problems from excess moisture in the home such as mold, mildew, warped wood, peeling of paint, or musty odors. Whole Home Dehumidification Systems are Energy Star rated providing efficient and economical operation.

### Dehumidification

The DR90A3000 dehumidifier utilizes refrigeration and internal air circulation to cool the incoming air stream below its dew point. Water condenses and drains off the coil, sending drier air back into the house.

- Can remove up to 90 pints/day of moisture.
- Energy Star rated
- Multitude of external controller options
- Side ducted exhaust
- Reduced noise during operation
- MERV 11 air filtration

### Ventilation

The DR90A3000 has a separate control for ventilation, so the powerful onboard blower can be used to efficiently bring fresh air into the house even when dehumidification is not needed. The DR90A3000 has a 6" supply side damper that can be used to duct in air from the outside, or closed if not needed.

### Simplified Wiring

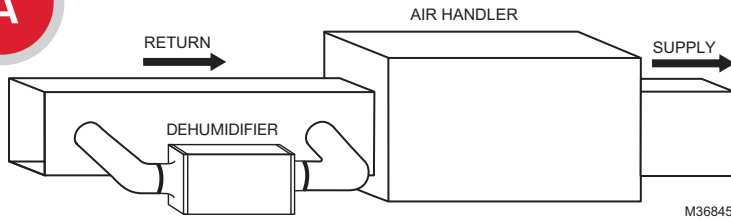
The DR90A3000 dehumidifiers can be controlled by a variety of 24-volt remote wired and wireless controls.

The DR90A3000 allows the use of a 24V normally closed float switch or water sensor to simplify installation in a drain pan. This will allow the external float switch to kill power to the compressor in the event of water blockage.



**A**

## Main Return to Main Return

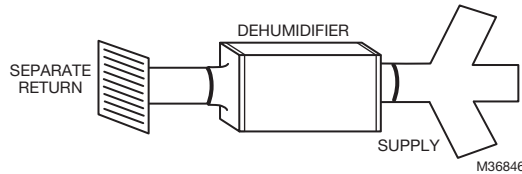


Ideal when...

- Running DR90A3000 with A/C operation.
- System fan must run with dehumidifier.
- Minimizing discharge air temperature (DAT) increase is preferred.
- Access to a dedicated central return for DR90A3000 is not available.

**B**

## Dedicated Return to Dedicated Supply



Ideal when...

- DR90A3000 will not be ducted to a forced air HVAC system.



1. Never operate a unit with a damaged power cord. If the power cord is damaged it must be replaced by the manufacturer, its service agent, or similarly qualified person in order to avoid a hazard.
2. The appliance is not intended for use by persons (including children) with reduced physical, sensory, or mental capabilities, or lack of experience and knowledge, unless they have been given supervision or instruction concerning use of the appliance by a person responsible for their safety. Children should be supervised to ensure that they do not play with the appliance.

  
**resideo**

[www.resideo.com](http://www.resideo.com)

Resideo Inc., 1985 Douglas Drive North  
Golden Valley, MN 55422  
1-800-468-1502  
33-00329-04 SA Rev. 01-24