



Braukmann FK06 DialSet®

LEAD FREE PRESSURE REGULATING FILTER COMBINATION

SUBMITTAL SHEET

Job Name	
Engineer	
Mechanical Contractor	
Contractor's P.O. No.	
Representative	
Notes	

Model(s)				
	Qty.		Notes	
	Qty.		Notes	
	Qty.		Notes	
Approval				
Service				
Tag No.				

APPLICATION

The FK06 DialSet Pressure Regulating Filter Combination is a high-quality pressure regulating valve and rinsable filter that maintains a constant outlet pressure over a wide range of inlet supply pressures and ensures a continuous supply of filtered water. It is suitable for potable water and irrigation applications. The downstream pressure adjustment dial eliminates the need for a pressure gauge when adjusting the pressure setting (static pressure only).

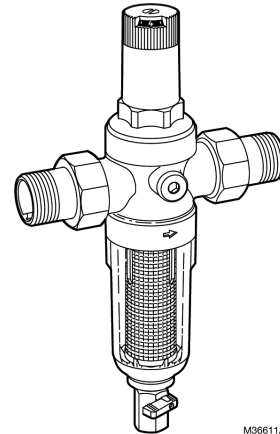
SPECIFICATIONS

- Model:** FK06 DialSet Pressure Regulating Filter Combination
- Regulator Mechanism:** Fabric-reinforced diaphragm.
- Filter Mechanism:** Stainless steel 50 micron rinsable filter insert.
- Seat Design:** Balanced single seat construction.
- Inlet Pressure (Maximum):** 250 psi maximum.
- Reduced Pressure Range:** 25 to 90 psi (1/2 in. to 2 in.).
- Outlet Pressure:** Factory set at 60 psi (414 kPa).
- Dial Calibration:** ± 4 psi.
- Differential:** 14.5 psi minimum (inlet to outlet).
- Fluid Temperature (Maximum):**
Water: 140° F (60° C).
- Ambient Temperature Range:**
33° F to 140° F (1° C to 60° C).
- Pipe Sizes Available:** 3/4 in., 1 in., 1-1/4 in. available.
- Connections:** Can be configured as female thread-by-thread, double-union, NPT threaded or sweat.
- Low Lead Content:** < 0.08% Lead.
- Gauge Tap:** 1/4" NPT.
- Approvals:** ASSE 1003-2020 Listed, CSA B356 Listed, IAPMO Listed, NSF/ANSI 61/372 Compliant.

MATERIALS

- Body:** Lead-free ECO BRASS®
- Internal Parts:** Stainless steel and engineered plastics
- Regulator Mechanism:** Fabric-reinforced diaphragm
- *Lead Free Plumbing Code Compliance:** The wettable surfaces of lead free models contain less than 0.25% of lead by weighted average.

DIMENSIONS



Model Number	Pipe Size	Dimensions, Approximate	
		Inch (H x L)	mm (H x L)
Double-Union Sweat			
FK06-101-DUS-LF	3/4"	9-3/4" x 5-13/64"	247 x 132
FK06-102-DUS-LF	1"	11-9/16" x 6-17/32"	293 x 166
FK06-103-DUS-LF	1-1/4"	11-9/16" x 7-1/8"	293 x 181
Double-Union Threaded			
FK06-101-DUT-LF	3/4"	9-3/4" x 5-13/64"	247 x 132
FK06-102-DUT-LF	1"	11-9/16" x 6-1/16"	293 x 154
FK06-103-DUT-LF	1-1/4"	11-9/16" x 6-47/64"	293 x 171



WATER CAPACITIES

The suitability of a given regulator size is dependent on the pressure requirements where it will operate. For the pressure regulator valve size required for a specific installation, determine the following:

1. Pressure differential between inlet and outlet pressure in pounds per square inch (psi),
2. Capacity in gallons per minute, and
3. Allowable reduced pressure falloff in psi. Given these variables, use the table below to determine the proper size pressure regulator valve for your application.

Example: An installation has 135 psi inlet pressure, 60 psi outlet pressure (75 psi pressure differential). If a 15 gpm capacity is required with only 10 psi falloff allowable, a 3/4 in. FK06 is required.

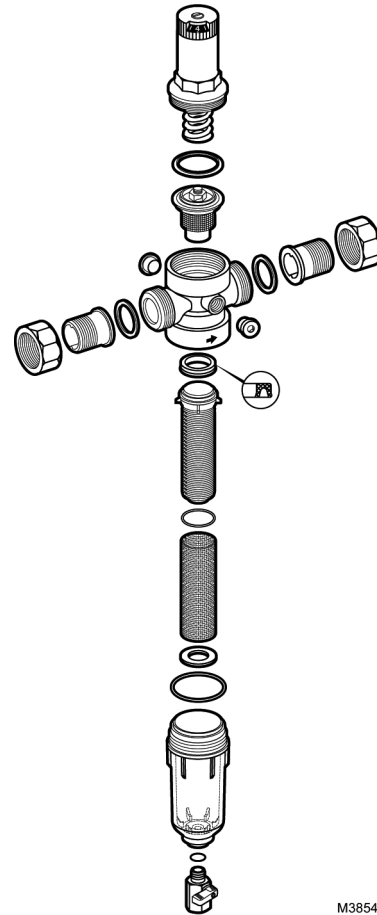
Pressure Regulator Valve Size	Reduced Pressure Falloff (PSI)	Pressure Differential Between Inlet and Outlet.			
		25 psi	50 psi	75 psi	100 psi or more
		Flow Capacity (US gpm)	Flow Capacity (US gpm)	Flow Capacity (US gpm)	Flow Capacity (US gpm)
3/4"	6	8.2	8.85	7.95	6.63
	10	17.17	21.05	25.23	26.33
	15	19.86	25.14	29.32	32.85
	20	21.27	26.42	30.42	33.82
1"	6	11.18	11.23	9.51	9.11
	10	18.01	18.98	17.39	16.78
	15	25.67	28.14	28.71	26.9
	20	30.69	34.7	36.19	35.05
1-1/4"	6	7.53	6.34	7.26	7.13
	10	20.25	17.88	15.15	14
	15	33.02	34.87	32.63	29.68
	20	40.07	44.29	46.01	34.61

FK06 FIXTURE UNIT

Flow rates based on submittal sheet FK06, based on flush tank systems with a 15 psi fall-off defined by IAPMO/ANSI UPC 1-2009.

Size	I/s	GPM	Fixture Units
3/4"	1.58	25.14	40
1"	1.77	28.14	48
1-1/4"	2.19	34.87	70

Capacities are based on a 100 psi supply pressure and a difference of 50 psi or more between the initial supply pressure and the reduced no-flow pressure. Check local water pressures before selection.



M38540

By using this Resideo literature, you agree that Resideo will have no liability for any damages arising out of your use or modification to, the literature. You will defend and indemnify Resideo, its affiliates and subsidiaries, from and against any liability, cost, or damages, including attorneys' fees, arising out of, or resulting from, any modification to the literature by you.



Resideo Technologies, Inc.
1985 Douglas Drive North, Golden Valley, MN 55422
1-800-468-1502
38-00060-06 M.S. Rev. 07-22 | Printed in United States