

resideo



THERMOSTATIC MIXING VALVES

Get The Peace Of Mind That Comes From
Improved Safety, Protection And Comfort.

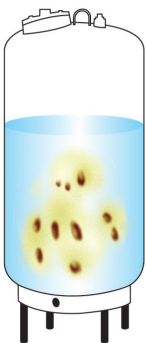
RESIDEO BRAUKMANN THERMOSTATIC MIXING VALVES

Provide Increased Protection And Comfort For Your Family

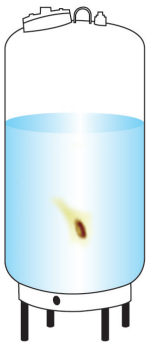
PROTECTION

Mixing Valves Help To Prevent Bacteria Growth

When a water heater’s temperature is set too low, deadly Legionella bacteria can grow. The growth of Legionella is reduced when the water is heated to 140° F. A Resideo Braukmann mixing valve allows you to set your water heater at a higher temperature to kill bacteria while eliminating concerns about water being too hot at the tap.



95° F to 110° F
Legionella Growth



140° F to 180° F
Legionella Growth
Controlled

Resideo Braukmann mixing valves are designed to prevent the growth of bacteria by allowing you to set your water heater at 140° F.

SAFETY

Mixing Valves Help To Prevent Scalding*

Mixing valves also help prevent burns and injuries due to scalding. As the chart below shows, burns from hot water can occur in just seconds — even less for small children. A mixing valve reduces the temperature at the water heater, so your family can use the shower, washing machine or bidet without fear of scalding.

*when used as directed

TEMPERATURE	ADULTS	CHILDREN 0-5 YEARS ²
	Skin thickness of 2.5 mm	Skin thickness of 0.56 mm
160° F	1 second	.05 seconds
155° F	1.5 seconds	1 second
150° F	2 seconds	1.5 seconds
145° F	3 seconds	2 seconds
140° F	5 seconds	3 seconds
135° F	15 seconds	4 seconds
130° F	35 seconds	10 seconds
125° F	3 minutes	2 minutes
120° F	10 minutes	5 minutes
100° F	Safest Water Temperature for Bathing	

Burns can occur quickly, but Resideo mixing valves help prevent scalding. In fact, Resideo Braukmann mixing valves meet the most stringent safety standards in the industry.



COMFORT

Enjoy More Available Hot Water

The demands of today's busy families can often be a strain on the hot water supply, but not with a Resideo Braukmann mixing valve. By raising the stored water temperature to 140° F or higher, less hot water is required to mix with the cold water to reach a comfortable temperature. The mixing action gives you up to 60-gallon performance from a 40-gallon tank.

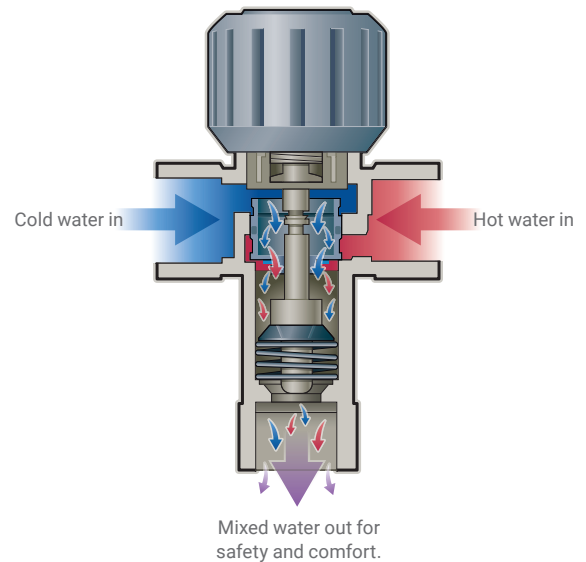


The mixing action of a Resideo Braukmann mixing valve can give you up to 60-gallon performance from a 40-gallon tank — it's like adding a larger water heater without taking up the space.

HOW MIXING VALVES WORK

Cold Water Is Mixed With Hot Water To Provide Safety And Comfort.

A Resideo Braukmann mixing valve allows you to set your water heater to a higher temperature to reduce the threat of bacteria growth, yet the mixing action helps prevent scalding. Plus, you'll increase your available hot water supply by mixing hot water with cold.



RESIDEO BRAUKMANN MIXING VALVES

One little addition that helps improve your family's safety, health and comfort. Ask your contractor which mixing valve is right for you.



Sources

Legionella. Legionella 2003. An updated and statement by the Association of Water Technologies. June 2003. <http://www.awt.org/Legionella03.pdf>

Information gathered from:
Hot water burn and scalding graph. (2004)

Retrieved June 20, 2005, from Hot Water Burn Prevention and Consumer Safety Web site: http://www.accuratebuilding.com/services/legal/charts/hot_water_burn_scalding_graph.html.



Resideo Technologies, Inc.

1985 Douglas Drive North
Golden Valley, MN 55422
1-800-468-1502
resideo.com

For more information

resideo.com/pro/water