



SPECIFICATION DATA

L4029E MANUAL-RESET LIMIT CONTROL

application: The L4029E Limit Controller is a manual-reset safety device which breaks line-voltage contacts as air temperature reaches a pre-determined cutout level. A typical application is that of sensing a rise in temperature in an exhaust duct which might indicate fire.

NOTE—This device is a limit control only, and it should not be used as a starting switch. Once the L4029E has opened, power must be shut off elsewhere in the circuit before resetting the limit control manually.

construction: The L4029E consists of a bi-metal operated spst switch and a sturdy metal housing. Models are factory adjusted to break at specified temperatures (see TEMPERATURE CUTOUT SETTING below). The manual reset button is situated on the front of the device.

specifications:

MODEL: L4029E Manual-Reset Limit Control.

TEMPERATURE CUTOUT SETTING (Fixed):

125, 135, 145, 165, 200, 225, and 240 F.

ELECTRICAL RATINGS (in amperes):

	30 v ac	120 v ac	240 v ac
Full Load	2	10	6
Locked Rotor		60	36

0.25 amp full load at 0.25 to 12 v dc.

2000 va maximum connected load.

SWITCH ACTION: Opens circuit and locks out on a temperature rise to cutout point.

MANUAL RESET: Button protrudes from front cover. Must be pressed and released to re-make circuit (after approximate 25 deg. (F) fall in temperature).

DIFFERENTIAL: Manual reset only, after approximate 25 deg. (F) fall in temperature.

DIMENSIONS: See Fig. 1.

ELEMENT LENGTH: Nominal $3\frac{1}{4}$ in. (150 F and 125 C available in nom. $7\frac{1}{4}$ in.).

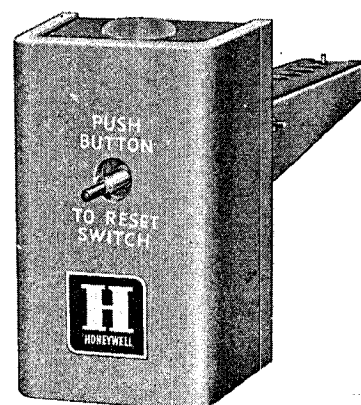
MOUNTING MEANS: Two screw holes are provided at back of case.

WIRING KNOCKOUTS: Top and bottom—for $\frac{1}{2}$ -in. conduit.

FINISH: Light grey.

APPROVALS: U.L. Listed

typical operation: As the temperature in the controlled space rises above the cutout point (factory set), the bi-metal opens the control circuit, shutting down equipment. The circuit will remain open until the sensed temperature has dropped approximately 25 degrees (F), at which time the device may again be reset manually.



WHEN SPECIFYING, INDICATE:

1. Model number.
2. Cutout point.
3. Element length.

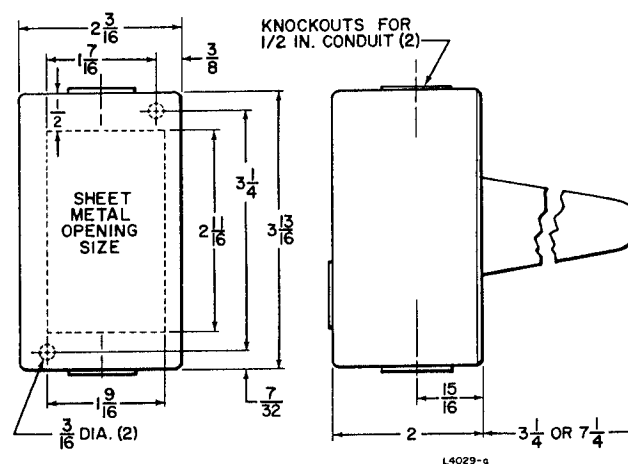


Fig. 1—Approximate Mounting and Case Dimensions in Inches.

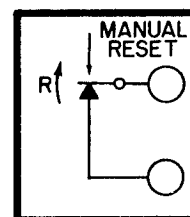


Fig. 2—Switch Action.