



## Installation Instructions Directives d'installation Instrucciones de instalación

### RCW100KB

Wired Chime Contractor Kit  
Kit de carillon à fil RCW100KB pour entrepreneur  
Kit de campanilla cableada para contratista

#### Kit contents:

- White wall mounted Chime
- Two Wired push buttons
- Mounting screws

#### You will require:

- Bell wire, Batteries or Transformer (Honeywell Home part number RCA 900N) depending on your installation.

#### L'ensemble comprend :

- Carillon mural blanc
- Deux sonnettes à fil
- Vis de fixation

#### Vous aurez besoin de :

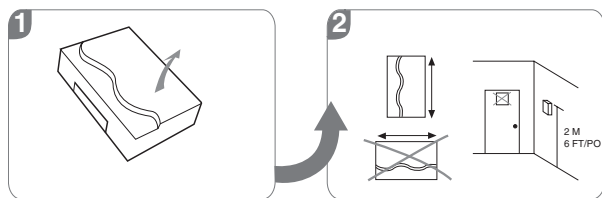
- Fil pour sonnette, piles ou transformateur (n° de pièce Honeywell Home RCA 900N) selon l'installation.

#### Contenido del kit:

- Campanilla blanca para montaje en pared
- Dos botones pulsadores cableados
- Tornillos de fijación

#### Necesitará:

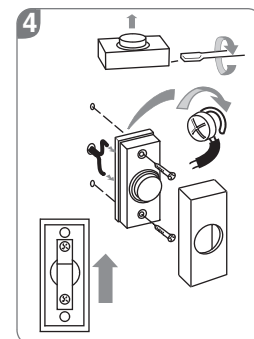
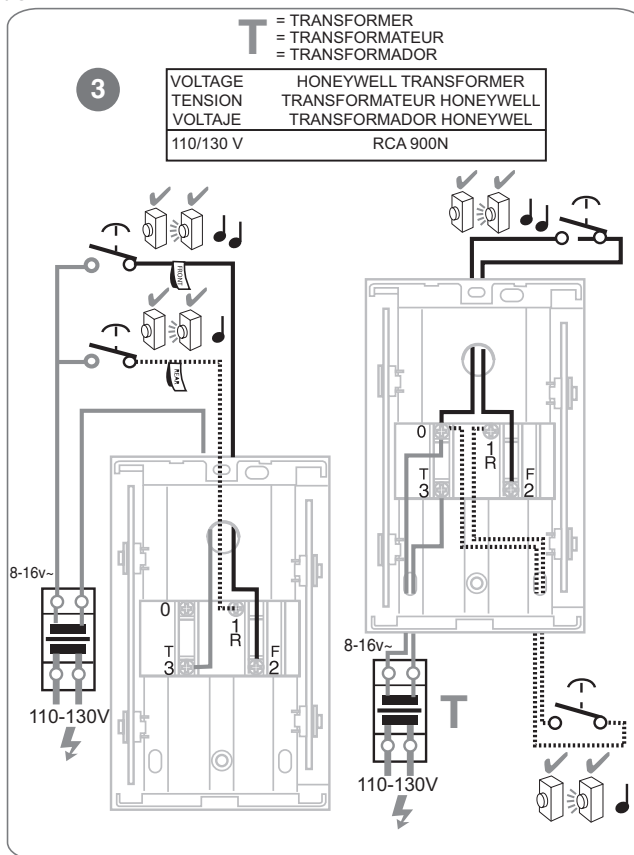
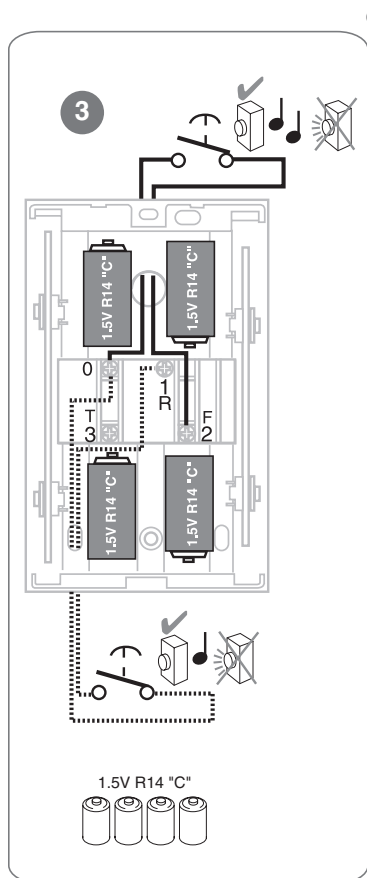
- Cable para timbre, baterías o transformador (Pieza de Honeywell Home No. RCA 900N) dependiendo de su instalación.



ATTENTION! / ATENCIÓN!

<input checked="" type="checkbox"/>	<input checked="" type="checkbox"/>	<input checked="" type="checkbox"/>	<input checked="" type="checkbox"/>

16 V-





**resideo**  
[www.resideo.com](http://www.resideo.com)

Resideo Inc., 1985 Douglas Drive North,  
Golden Valley, MN 55422

69-2126EFS-03 M.S. Rev. 02-19 | Printed in United States

©2019 Resideo Technologies, Inc. All rights reserved. The Honeywell Home trademark is used under license from Honeywell International Inc.  
Tous droits réservés. La marque de commerce Honeywell Home est utilisée sous licence avec l'autorisation d'Honeywell International Inc.  
Todos los derechos reservados. La marca comercial Honeywell Home se utiliza en virtud de la licencia emitida por Honeywell International Inc.